

# Agriculture

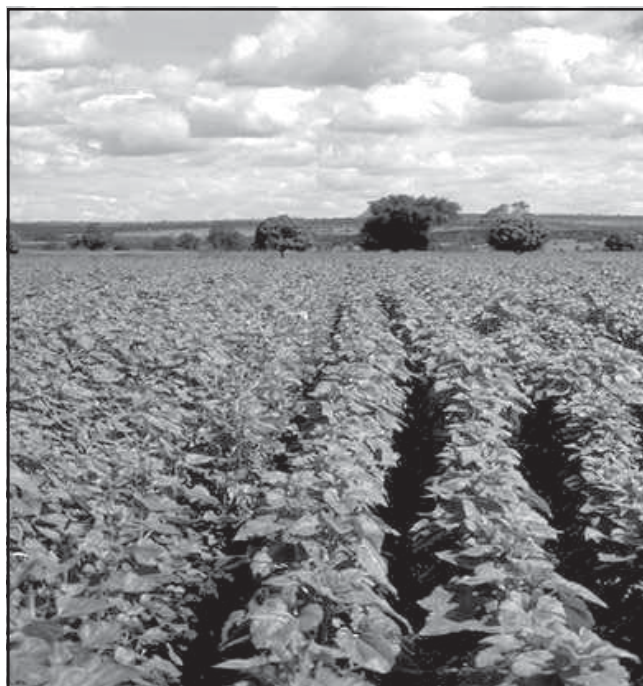
## Agriculture Transfer

Associate of Arts Degree (Transfer)  
Sioux City Campus

### Program Overview and Opportunities:

The Agriculture Transfer degree is designed to transfer to Iowa State University to complete the baccalaureate degree.

According to the Bureau of Labor Statistics, employment growth between 2006 and 2016 for all areas of agriculture and food scientists is projected to grow by 9% (2008 - 2009 Occupational Outlook Handbook).



### Agriculture Transfer Associate of Arts Degree Curriculum

Course #	Title	Credits
<b>ENG 105</b>	Composition I .....	3
<b>CSC 110</b>	Introduction to Computers .....	3
<b>MAT 121</b>	College Algebra .....	4
<b>AGA 114</b>	Principles of Agronomy* .....	3
<b>AGS 113</b>	Survey of the Animal Industry .....	3
<b>ENG 106</b>	Composition II .....	3
<b>SPC 112</b>	Public Speaking .....	3
<b>ECN 120</b>	Principles of Macroeconomics .....	3
<b>AGS 319</b>	Animal Nutrition* .....	3
<b>AGC 420</b>	Issues in Agriculture .....	3
<b>BIO 116</b>	General Biology IB .....	4
<b>SOC 115</b>	Social Problems .....	3
<b>PSY 111</b>	Introduction to Psychology .....	3
<b>AGS 270</b>	Foods of Animal Origin .....	3
<b>PHI 101</b>	Introduction to Philosophy .....	3
<b>FLS 141</b>	Elementary Spanish I .....	4
<b>CHM 122</b>	Introduction to General Chemistry .....	4
<b>HIS 110</b>	Western Civilization: Ancient to Early Modern .....	3
	General Education Electives .....	6
<b>Program Total .....</b>		<b>64</b>

\* Denotes courses commonly articulated with area high schools.

### Are You a Part-time Student?

All of these courses can be taken on a part-time basis  
See course descriptions in the back of the catalog for more detailed information about course prerequisites and co-requisites.  
Please see an advisor to ensure correct course sequence.

Sections of shading above indicate groups of courses that could be taken during the same semester if a full-time student is academically ready for all courses.

See course descriptions in the back of the catalog for more detailed information about course prerequisites and co-requisites.  
Please see an advisor to ensure correct course sequence.

### Program Advisor

Steve Ebsen, Division Chair  
Ext. 1232                      Room T219                      ebsens@witcc.edu

# Agriculture

## Agribusiness Technology

Associate of Applied Science Degree  
Sioux City Campus

### Program Overview and Opportunities:

The Agri-Systems Technology program is designed to enable students to find employment in the areas of production agriculture and agribusiness. Instructional areas include crop production, animal production, management, sales and

marketing.

Students will be provided with a combination of classroom instruction and agriculture/cooperative work experience.

Since agriculture and its supporting businesses employ about 25 percent of the labor force in the United States, there is a definite need for program graduates in the area, state and nation.



According to the Bureau of Labor Statistics, employment growth between 2006 and 2016 for all areas of agriculture and food scientists is projected to grow by 9% (2008 - 2009 Occupational Outlook Handbooks).

### Agribusiness Technology Curriculum

Course #	Title	Credits
<b>AGC 216</b>	Career Seminar .....	2
<b>AGA 114</b>	Principles of Agronomy* .....	3
<b>AGS 270</b>	Foods of Animal Origin .....	3
<b>AGA 154</b>	Fundamentals of Soil Science* .....	3
<b>ENG 105</b>	Composition I .....	3
<b>AGS 113</b>	Survey of Animal Industry .....	3
<b>AGC 420</b>	Issues in Agriculture .....	3
<b>AGS 319</b>	Animal Nutrition .....	3
<b>CSC 110</b>	Introduction to Computers .....	3
<b>AGC 403</b>	Transitioning to Organic Farming & Certification .....	2
<b>SPC 112</b>	Public Speaking .....	3
<b>MAT 772</b>	Applied Mathematics (3) <b>OR</b>	
<b>MAT 121</b>	College Algebra (4) .....	3 or 4
<b>AGC 936</b>	Occupational Experience .....	3
<b>AGB 466</b>	Agriculture Finance* .....	3
<b>AGT 250</b>	Food and Bio-security Issues .....	1
<b>ECN 120</b>	Principles of Macroeconomics <b>OR</b>	
<b>ECN 130</b>	Principles of Microeconomics .....	3
<b>PSY 102</b>	Human and Work Relations* .....	3
	Business Elective .....	3
	General Education Elective .....	3
<b>MGT 101</b>	Principles of Management .....	3
<b>SDV 153</b>	Pre-employment Strategies .....	2
<b>AGB 437</b>	Commodity Marketing .....	3
<b>MKT 140</b>	Principles of Selling .....	3
<b>AGC 936</b>	Occupational Experience .....	3
	General Education Elective .....	3
<b>Total Credits .....</b>		<b>70</b>

\* Denotes courses commonly articulated with area high schools.

### Program Advisor

Steve Ebsen, Division Chair  
Ext. 1232                      Room T219                      ebsens@witcc.edu

Sections of shading above indicate groups of courses that could be taken during the same semester if a full-time student is academically ready for all courses.

See course descriptions in the back of the catalog for more detailed information about course prerequisites and co-requisites.

Please see an advisor to ensure correct course sequence.

# Agriculture

## Agriculture

Associate of Applied Science Degree  
Sioux City Campus

### Program Overview and Opportunities:

The Agriculture program provides a broad agriculture knowledge-base for students. The graduates may secure employment in the areas of production agriculture and agribusiness. Instructional areas include crop production, animal production, finance, management, sales, and marketing. This agriculture degree is offered online. Students may gain relevant hands-on experience with agribusinesses within their locality or beyond.

Since agriculture and its supporting businesses employ about 25 percent of the labor force in the United States, there is a need for the program graduates at the local, regional, state, and/or national levels.

According to the Bureau of Labor Statistics, employment growth between 2006 and 2016 for all areas of agriculture and food scientists is projected to grow by 9% (2008 - 2009 Occupational Outlook Handbooks).

### Agriculture Curriculum

Course #	Title	Credits
<b>AGA 114</b>	Principles of Agronomy*	3
<b>AGA 154</b>	Fundamentals of Soil Science*	3
<b>AGS 113</b>	Survey of the Animal Industry	3
<b>AGS 242</b>	Animal Health	3
<b>CSC 110</b>	Introduction to Computers	3
	Agriculture Electives	3
<b>AGB 235</b>	Introduction to Ag Marketing	3
<b>AGB 470</b>	Farm Records Acct. Analysis	3
<b>AGB 336</b>	Agricultural Selling	3
<b>ENG 105</b>	Composition I	3
<b>MAT 772</b>	Applied Mathematics (3) OR	
<b>MAT</b>	Higher Math (4)	3 or 4
	Agriculture Electives	3
<b>AGC 936</b>	Occupational Experience	3
<b>AGB 437</b>	Commodity Marketing	3
<b>AGB 330</b>	Farm Business Management	3
<b>AGP 329</b>	Introduction to GPS	3
	Agriculture Elective	3
	General Education Elective (SOC or PSY)	3
<b>AGA 158</b>	Soil Fertility	3
<b>AGH 284</b>	Pesticide Application Certification	3
	Agriculture Electives	7
	General Education Elective	3
	Humanities or Healthful Living/Leisure	3
<b>Agriculture Electives from which to choose:</b>		
<b>AGA 376</b>	Scouting	3
<b>AGB 210</b>	Ag Law	2
<b>AGB 331</b>	Entrepreneurship	3
<b>AGC 420</b>	Issues in Agriculture	3
<b>AGM 155</b>	Equipment Management	1.5
<b>AGS 228</b>	Beef and Forage Production	5
<b>AGS 270</b>	Foods of Animal Origin	3
<b>AGS 319</b>	Animal Nutrition	3
<b>AGS 403</b>	Organic Farming Transitioning and Certification	2
	<b>Minimum Required Agriculture Electives</b>	<b>16</b>
	<b>Total Credits</b>	<b>73</b>

\* Denotes courses commonly articulated with area high schools.

### Program Advisor

Steve Ebsen, Division Chair  
Ext. 1232 Room T219 ebsens@witcc.edu

Sections of shading above indicate groups of courses that could be taken during the same semester if a full-time student is academically ready for all courses.

See course descriptions in the back of the catalog for more detailed information about course prerequisites and co-requisites.

Please see an advisor to ensure correct course sequence.

# Agriculture

## Agriculture

Diploma  
Sioux City Campus

### Program Overview and Opportunities:

This two-semester diploma option will give the graduate entry-level skills in crop production, livestock management, and agricultural marketing. This agriculture diploma is offered online. Students may gain relevant hands-on experience with agribusinesses within their locality or beyond.



### Agriculture Diploma Curriculum

Course #	Title	Credits
<b>AGA 114</b>	Principles of Agronomy*	3
<b>AGA 154</b>	Fundamentals of Soil Science*	3
<b>AGS 113</b>	Survey of the Animal Industry	3
<b>AGS 242</b>	Animal Health	3
<b>CSC 110</b>	Introduction to Computers	3
	Agriculture Electives	3
<b>AGB 235</b>	Introduction to Ag Marketing	3
<b>AGB 330</b>	Farm Business Management	3
<b>AGB 336</b>	Agricultural Selling	3
<b>ENG 105</b>	Composition I	3
<b>MAT 772</b>	Applied Mathematics (3) OR	
<b>MAT</b>	Higher Math (4)	3 or 4
	Agriculture Electives**	3
<b>Total Credits</b>		<b>36 or 37</b>

#### \*\*Ag Elective Courses:

<b>AGB 331</b>	Entrepreneurship in Agriculture	3
<b>AGM 155</b>	Equipment Management	1.5
<b>AGC 420</b>	Issues in Agriculture	3
<b>AGS 319</b>	Animal Nutrition	3
<b>AGA 376</b>	Scouting Integrated Pest Management	3
<b>AGB 210</b>	Ag Law	2
<b>AGS 228</b>	Beef and Forage Production	5
<b>AGS 270</b>	Foods of Animal Origin	3

\* Denotes courses commonly articulated with area high schools.

### Program Advisor

Steve Ebsen, Division Chair  
Ext. 1232                      Room T219                      ebsens@witcc.edu

Sections of shading above indicate groups of courses that could be taken during the same semester if a full-time student is academically ready for all courses.

See course descriptions in the back of the catalog for more detailed information about course prerequisites and co-requisites.

Please see an advisor to ensure correct course sequence.

## Veterinary Assistant

Diploma  
Sioux City Campus

### Program Overview and Opportunities:

The Veterinary Assistant program prepares students to work as veterinary assistants in a variety of settings including animal hospitals and clinics, animal shelters, laboratories, zoos, and animal parks. The veterinary assistant provides basic care, performs laboratory procedures, and assists in the veterinary clinic with other functions.

The program includes classroom theory, laboratory, and internship experience in local veterinary clinics. Students receive hands-on experience with animals. Program content requires the application of basic math, technical reading, and communication skills.

Graduates will be able to provide basic nursing animal care and assist with laboratory procedures used in veterinary clinics, including surgical procedures in clinics as well as in field settings.

The Iowa Workforce Information Network shows the demand for Veterinary Assistants increasing by 16.8% by 2014. The average salary of people entering this profession in Iowa is \$9.30 per hour or \$19,350 per year. (2006)



### Veterinary Assistant Curriculum

Course #	Title	Credits
<b>AGC 216</b>	Career Seminar .....	2
<b>AGV 121</b>	Veterinary Medical Terminology .....	2
<b>AGV 156</b>	Veterinary Reception & Administration Skills .....	2
<b>AGV 176</b>	Animal Nursing (Small and Large) .....	3
<b>AGS 242</b>	Animal Health .....	3
<b>CSC 110</b>	Introduction to Computers .....	3
<b>AGV 102</b>	Animal Handling and Restraint .....	1
<b>Term Total .....</b>		<b>16</b>
<b>AGS 319</b>	Animal Nutrition .....	3
<b>AGV 109</b>	Pharmacy Skills .....	3
<b>AGV 157</b>	Animal Anatomy & Physiology .....	3
<b>AGV 173</b>	Veterinary Surgical Concepts .....	3
<b>AGV 174</b>	Clinical Studies .....	3
<b>AGS 113</b>	Survey of the Animal Industry .....	3
<b>Term Total .....</b>		<b>16</b>
<b>AGV 932</b>	Internship .....	3
<b>MAT 772</b>	Applied Math .....	3
<b>Term Total .....</b>		<b>6</b>
<b>Program Total: .....</b>		<b>38</b>

### Are You a Part-time Student?

The following courses could be taken on a part-time basis before acceptance into the Vet Assistant program. Some of these courses are offered online.

Refresher reading, or math if CPT scores warrant; **AGC 216, AGS 242, CSC 110, AGS319, AGS 113 and Math 772.** These courses are available for non-Vet Asst. students or prospective program students.

Please see a program advisor to develop an individualized plan of study.

### Program Advisor

Steve Ebsen, Division Chair  
Ext. 1232                      Room T219                      ebsens@witcc.edu

Sections of shading above indicate groups of courses that could be taken during the same semester if a full-time student is academically ready for all courses and formally accepted into the Veterinary Assistant program.

See course descriptions in the back of the catalog for more detailed information about course prerequisites and co-requisites. Please see a program advisor to ensure correct course sequence.